

99 Thunderbolts Way Uralla, NSW



3



1



2

## NIGHTINGALE

AUCTION 13/7/19 onsite 10AM.

Nightingale is a stunning edwardian brick home located on the fringes of Uralla. Set amongst 4 acres of mature and established lawns and gardens at the foot of Mount Mutton, the home was reputedly built in its chosen location so the owners could hear the bands perform at Alderley Park.

Built in 1911, the home was utilised as both as a private residence and a private hospital throughout its life time.

**Cayne Moar**

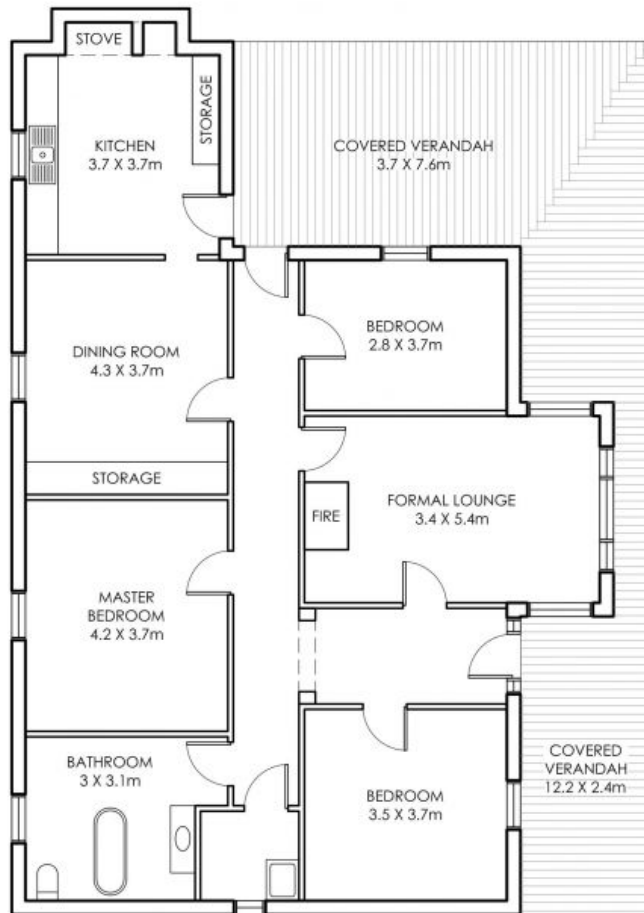
0431 435 958

'NIGHTINGALE'  
99 Thunderbolts Way,  
Uralla NSW 2358

Agent: Cayne Moar  
Armitage & Buckley  
0431 435 958



Home: 123.4m<sup>2</sup>  
Land: 10.2 acres  
Studio: 13.6m<sup>2</sup>



Floor Plans created for the exclusive use of  
Armitage & Buckley Real Estate  
0431 435 958

Layout floor plan + dimensions are all approximate + provided only as a guide. No warranties are provided with this layout.