



20 Roslyn Avenue Armidale, NSW



3



1



2

Tucked away and tidy

Tucked away into a quiet back street, on one of Armidales fringes is this quaint yet solid built brick home. An excellent prospect to simply move in and enjoy or add your own touches with a re-decoration.

A north facing living area captures excellent sun and spills through into the dining room.

Electric cooking, range hood and good storage compliment the views into the back yard from the kitchen.

3 bedrooms fit the family, the master with wall to wall built in robes and a northern aspect.

The main bath offers a dedicated shower, built in bath and separate toilet.

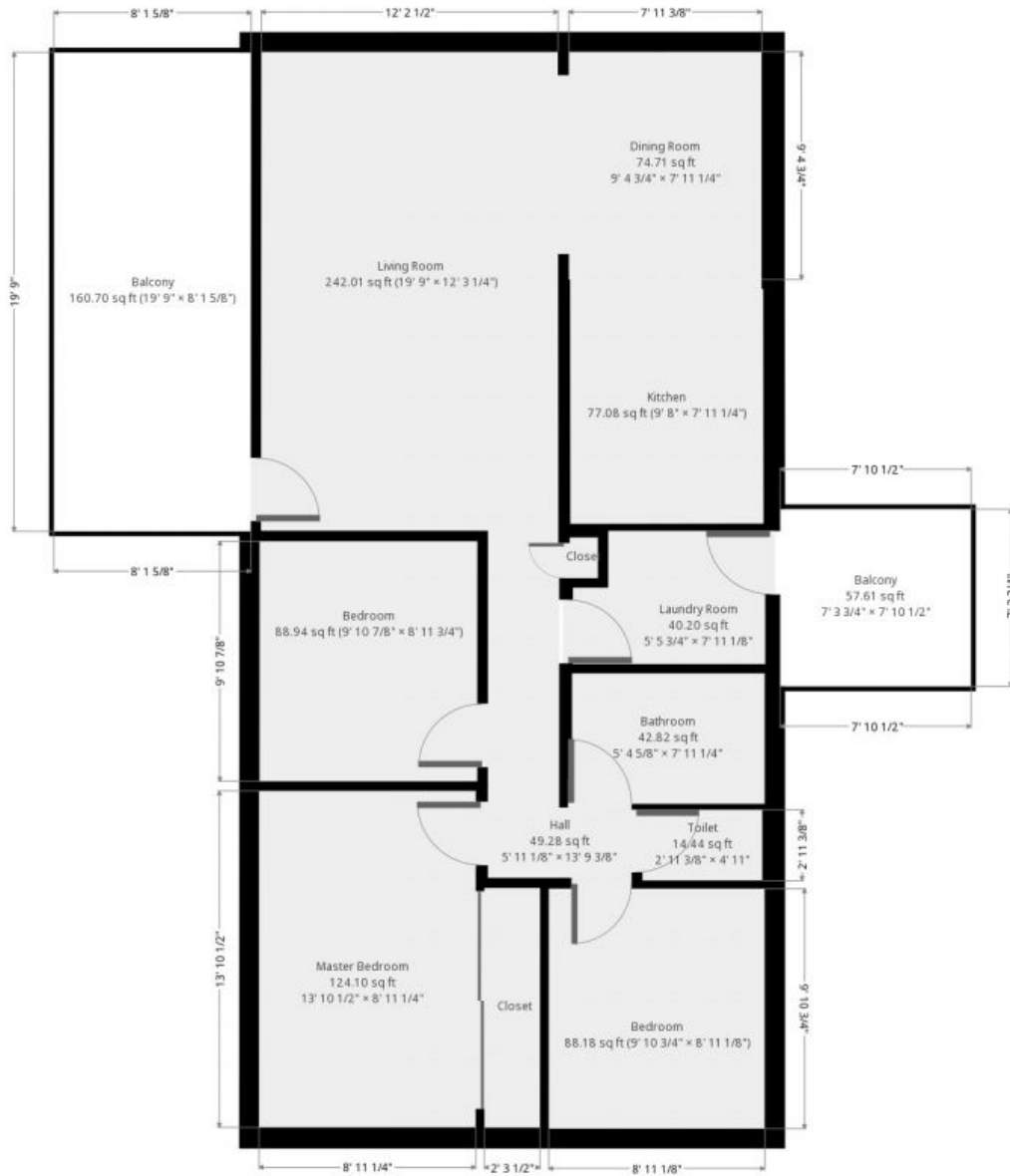
A great sized laundry opens onto the covered rear patio area.

Inspect:

Saturday, 2nd March 2019 11:20 - 11:40

Cayne Moar

0431 435 958



THIS FLOORPLAN IS PROVIDED WITHOUT WARRANTY OF ANY KIND. SENSOPIA DISCLAIMS ANY WARRANTY INCLUDING, WITHOUT LIMITATION, SATISFACTORY QUALITY OR ACCURACY OF DIMENSIONS.

20 Roslyn Avenue

Armidale, NSW