



5 Lara Avenue Armidale, NSW



3



1



2

Untouchable Value

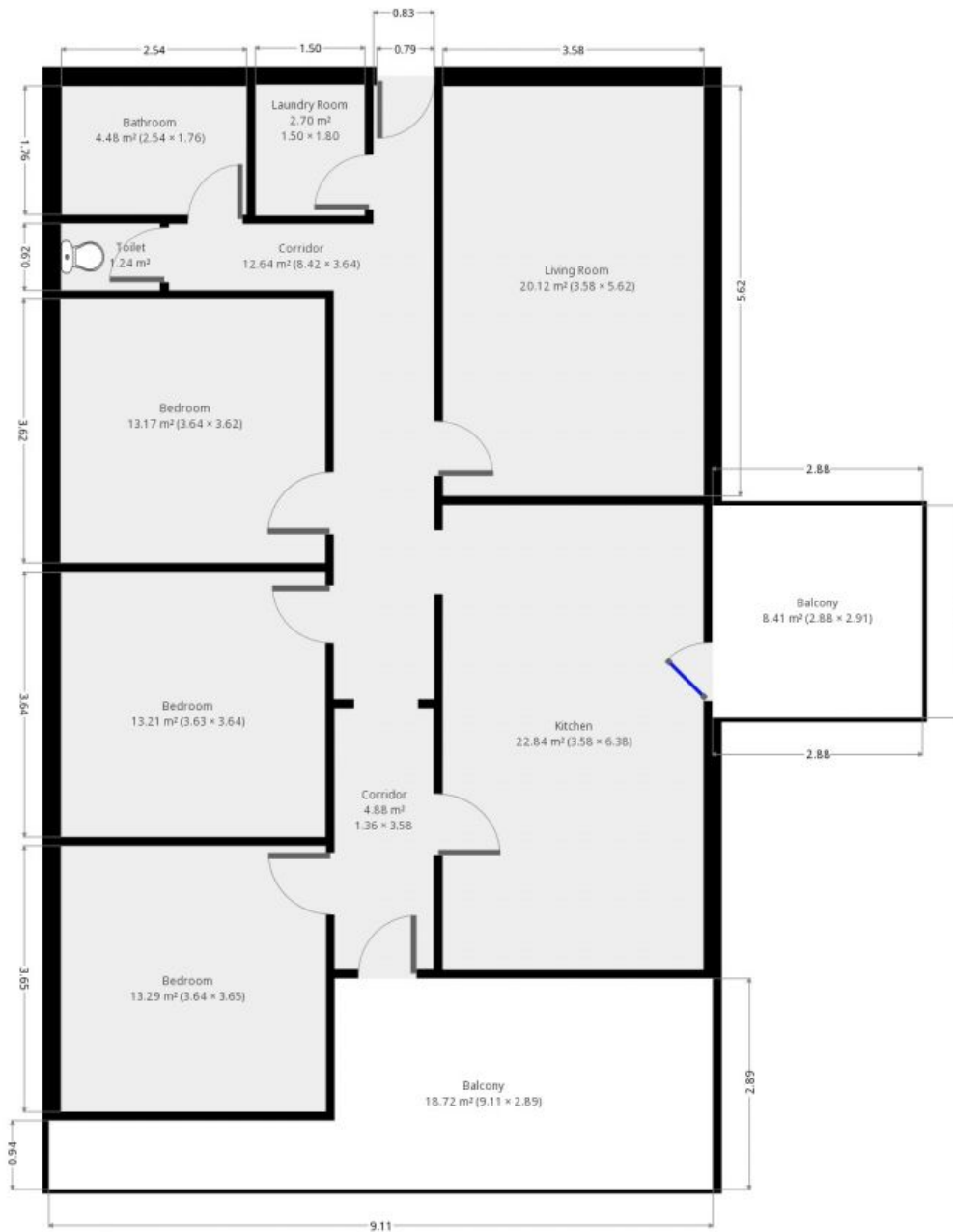
Located in up and coming Wybenia Estate, this traditional cottage residence shows excellent value in Armidales market, with great potential for capital growth.

Features include

- 3 bedrooms with traditional high ceilings, lining boards double hung windows and extended kick boards
- Open plan kitchen and dining area with gas heating and french doors opening onto the outdoor entertaining.
- Kitchen includes modern appliances, gas cooking and island bench with excellent storage.
- Separate lounge room with north easterly aspect and reverse cycle.
- Single bathroom with bath, shower and separate toilet.
- Slabbed double lock up garage with workshop.

Cayne Moar

0431 435 958



THIS FLOORPLAN IS PROVIDED WITHOUT WARRANTY OF ANY KIND. SENSOPIA DISCLAIMS ANY WARRANTY INCLUDING, WITHOUT LIMITATION, SATISFACTORY QUALITY OR ACCURACY OF DIMENSIONS.

5 Lara Avenue

Armidale, NSW