



89 Devoncourt Road Uralla, NSW



4



2

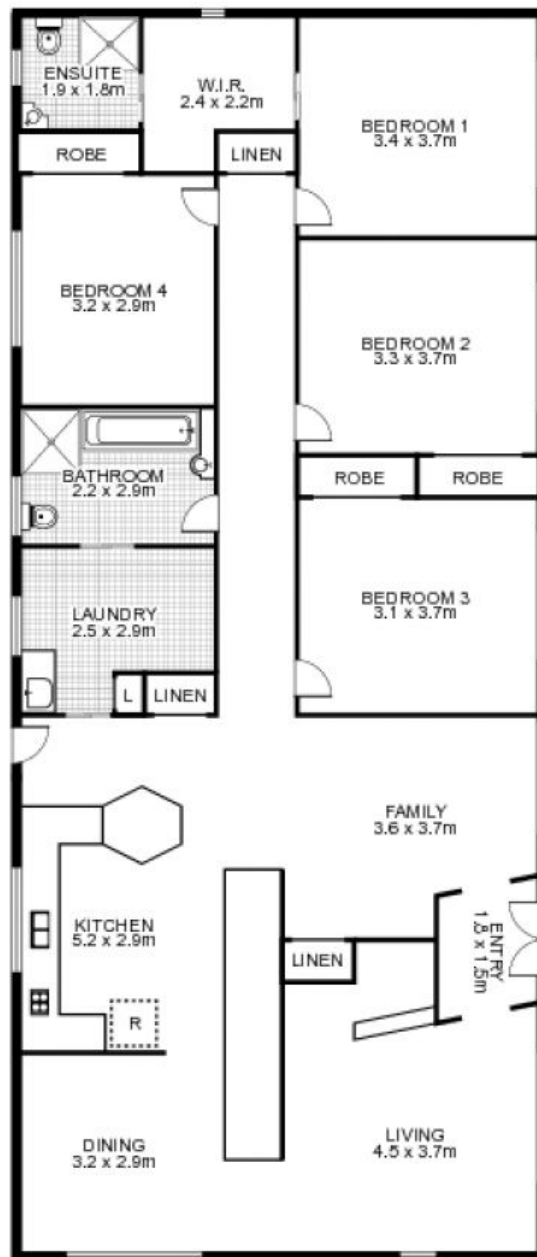
HISTORY AND POTENTIAL

Located just minutes from the township of Uralla lies Neoka Park. 286 acres of undulating, graze-able granite soil country. With approximately 60% fully arable, and the rest of loose timber stands with excellent native pastures underneath. Bordered by two watercourses on the eastern and western boundaries with domestic pumping access, plus multiple dams, the property offers excellent water assets, and dry condition capabilities.

A 4 bedroom brick homestead overlooks the front paddocks with a full north facing aspect and in true homestead style front and rear verandahs! Inside offers a choice of multiple living spaces, and all bedrooms bar one, have robes. The master includes a full walk in and ensuite.

Cayne Moar

0431 435 958



89 Devoncourt Road, URALLA

This floor plan is intended as a guide only. Layout dimensions are approximate only. No representations or warranties of any nature whatsoever are given or intended. Any person using this information should rely on their own enquiries. Floor Plans by SURROUNDPIX.