



9A Florence Crescent Armidale, NSW



3



1



1

## SIMPLICITY AT ITS FINEST

Tucked away in a private north hill cul de sac, this exceptional little home will most certainly prove to be a sound investment.

The home has recently undergone renovation, with fresh paint and carpet throughout. The kitchen features new benchtops, sink ware and restored timber doors.

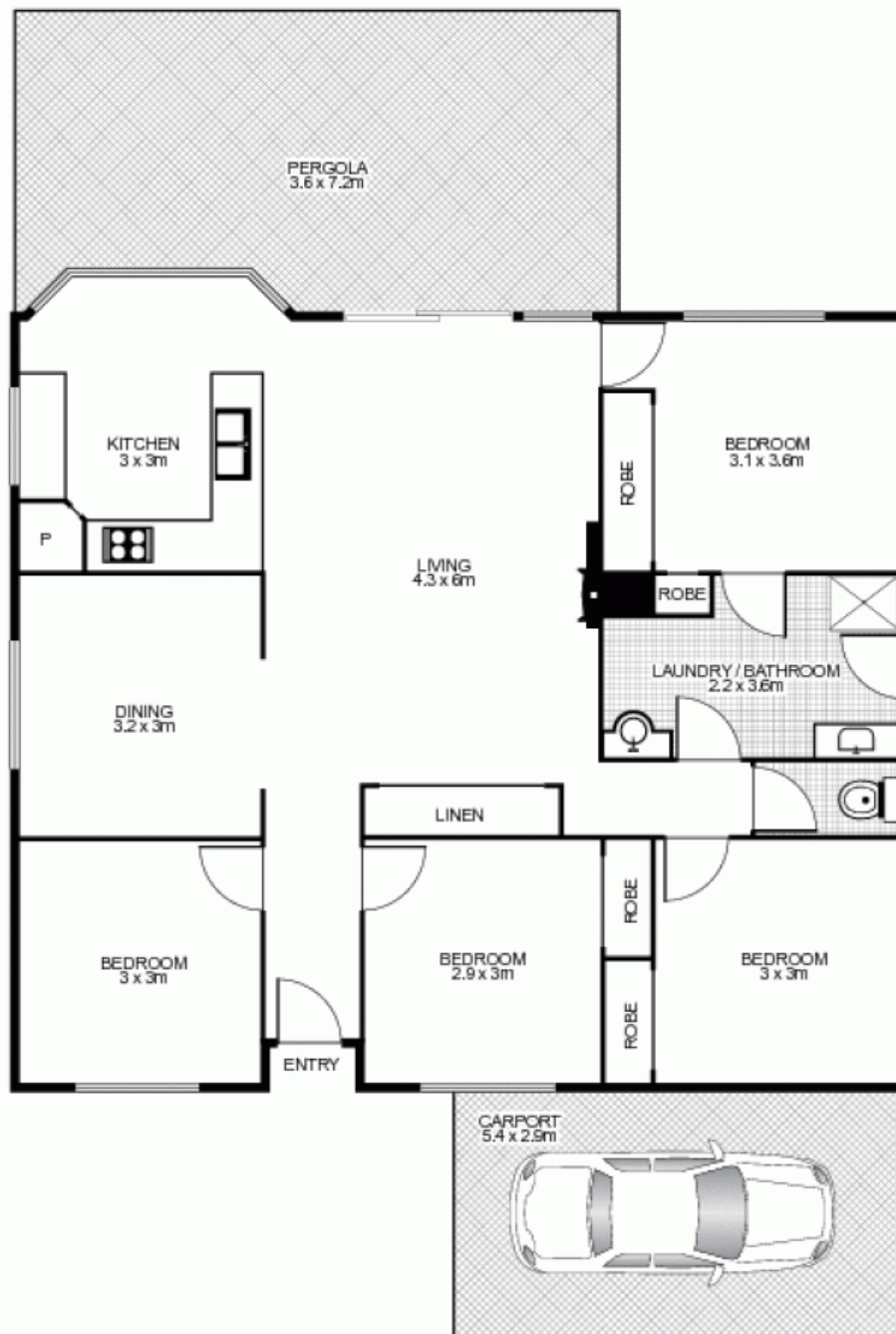
3 bedrooms on offer, all with built in wardrobes, plus a study that could easily be converted to a fourth if needed.

Simple open plan design takes care of the common areas with the centrally located living room off shooting to both the kitchen and dining area.

**Cayne Moar - Real**

0431 435 958

**Estate**



9a Florence Avenue, ARMIDALE



This floor plan is intended as a guide only. Layout dimensions are approximate only. No representations or warranties of any nature whatsoever are given or intended. Any person using this information should rely on their own enquiries. Floor Plans by SURROUNDPIX.